



CS-SRE-1-H(E)



CS-SRE-2-H(E)

**安全 SAFE**

採用燃燒控制器分步控制電磁閥，火種未點燃時，主氣閥不會打開；風機供風不正常，供氣不正常，意外熄火等故障，1秒鐘關閉燃氣，一鍵式風機、電子打火和離子熄火保護設計。Solenoid safety valve control, the main gas valve won't be opened until the pilot ignites; Gas will be cut off in 1 second once the air or gas is supplying abnormally, or an unexpected flame failure appears, prevent the explosion accident

**節能環保 ENVIRONMENTAL AND SAVING ENERGY**

鼓風預混燃燒，噪音小於65分貝，燃燒充分，一氧化碳排放量小於0.01%；燃氣和空氣混合燃燒充分，火力猛勁，熱效率高。與一般清風爐頭相比可節能30%以上。每個爐頭獨立配置風機，使用行鏈風制實現風氣聯動開關，可調節供風大小。Environmental Premix burner, noise is less than 65db, Gas full mix with air, completed combustion, fire, high thermal efficiency, saving energy up to 30% than general mixing burner. Each burner is equipped with a blower which adopts the chain wind system to realize the linkage switch, the blowing rate is adjustable.

標配(Standard): 調料板 水龍頭 鍋枕
選配(Optional): 凍水盆 蒸籠架
燃氣額定壓力(Rated gas pressure):
天然氣為2000Pa NG 2000Pa
人工煤氣為1000Pa TG 1000Pa
石油氣為2800Pa LPG 2800Pa

**規格參數表**

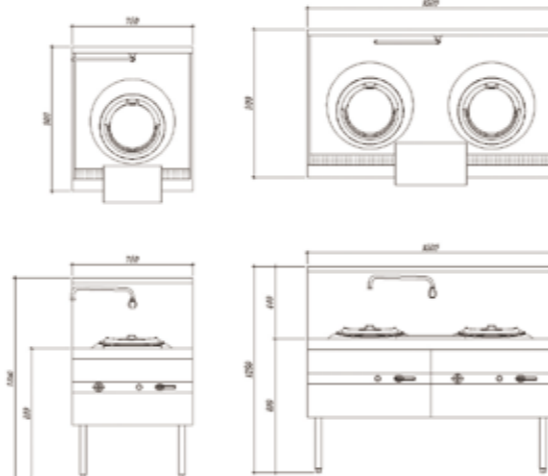
產品名稱 Product Name	型號 Model	規格(mm) Dimension	熱負荷 Heat Load	進氣口 Gas Inlet	進水/排水 Water Inlet/Drainage	風機 Blower
燃氣環保單頭什碎爐	CS-SRE-1-H(E)	750x900x810+440	32kW	DN20/DN25	DN15/DN40	220V/100W
燃氣環保雙頭什碎爐	CS-SRE-2-H(E)	1500x900x810+440	32kWx2	DN40/DN50	DN15/DN40	220V/100W*2

型號(E)表示帶電磁安全制 (E) stand for electromagnetic valve control  
進氣口DN25/DN50適用於人工煤氣 Gas inlnt DN25/DN50 support TG

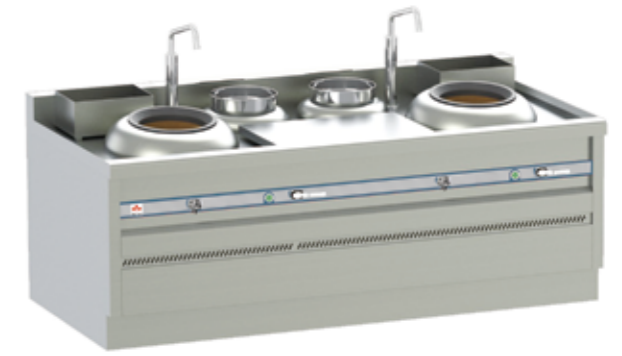
**耐用 DURABLE**

臺面整件成型，方便清潔；隔熱臺面，底部設計30mm厚的玻璃棉；爐頭內冷的氣體吸收爐頭外殼熱量，降低爐頭溫度，提高爐頭的使用壽命；整體爐磚，防止漏火損壞爐體；感應針使用溫度超過1200度，不易燒壞。

Countertop is integrally formed by punching, equipped with 30mm thick glass wool for insulation; The heat from the shell of the burner will be absorbed by the cold air inside the burner, reduce burner temperature, increase its lifetime. Overall furnace brickwork to prevent leakage; induction needle temperature over 1200 degrees and difficult to burn out.



CS-CRE-1-LF(E)



CS-CRE-2-LF(E)

**安全 SAFE**

採用燃燒控制器分步控制電磁閥，火種未點燃時，主氣閥不會打開；風機供風不正常，供氣不正常，意外熄火等故障，1秒鐘關閉燃氣，一鍵式風機、電子打火和離子熄火保護設計。Solenoid safety valve control, the main gas valve won't be opened until the pilot ignites; Gas will be cut off in 1 second once the air or gas is supplying abnormally, or an unexpected flame failure appears, prevent the explosion accident

**節能環保 ENVIRONMENTAL AND SAVING ENERGY**

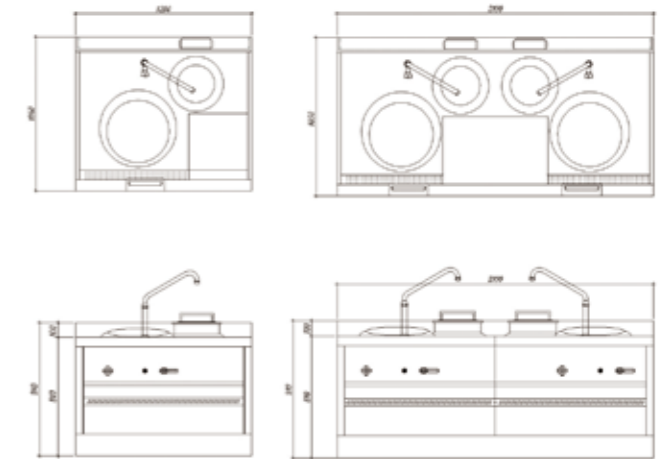
鼓風預混燃燒，噪音小於65分貝，燃燒充分，一氧化碳排放量小於0.01%；燃氣和空氣混合燃燒充分，火力猛勁，熱效率高。與一般清風爐頭相比可節能30%以上。每個爐頭獨立配置風機，使用行鏈風制實現風氣聯動開關，可調節供風大小。Environmental Premix burner, noise is less than 65db, Gas full mix with air, completed combustion, fire, high thermal efficiency, saving energy up to 30% than general mixing burner. Each burner is equipped with a blower which adopts the chain wind system to realize the linkage switch, the blowing rate is adjustable.

標配(Standard): 調料板 尾膠 水龍頭 鍋枕
選配(Optional): 凍水盆
燃氣額定壓力(Rated gas pressure):
天然氣為2000Pa NG 2000Pa
人工煤氣為1000Pa TG 1000Pa
石油氣為2800Pa LPG 2800Pa

**規格參數表**

產品名稱 Product Name	型號 Model	規格(mm) Dimension	熱負荷 Heat Load	進氣口 Gas Inlet	進水/排水 Water Inlet/Drainage	風機 Blower
燃氣環單頭開放型單頭炒爐	CS-CRE-1-LF(E)	1200x1050x810+100	42kW	DN20/DN25	DN15/DN40	220V/100W
燃氣環單頭開放型雙頭炒爐	CS-CRE-2-LF(E)	2100x1050x810+100	42kWx2	DN40/DN50	DN15/DN40	220V/100Wx2

型號(E)表示帶電磁安全制 (E) stand for electromagnetic valve control  
進氣口DN25/DN50適用於人工煤氣 Gas inlnt DN25/DN50 support TG



**耐用 DURABLE**

臺面整件成型，方便清潔；隔熱臺面，底部設計30mm厚的玻璃棉；爐頭內冷的氣體吸收爐頭外殼熱量，降低爐頭溫度，提高爐頭的使用壽命；整體爐磚，防止漏火損壞爐體；感應針使用溫度超過1200度，不易燒壞。

Countertop is integrally formed by punching, equipped with 30mm thick glass wool for insulation; The heat from the shell of the burner will be absorbed by the cold air inside the burner, reduce burner temperature, increase its lifetime. Overall furnace brickwork to prevent leakage; induction needle temperature over 1200 degrees and difficult to burn out.